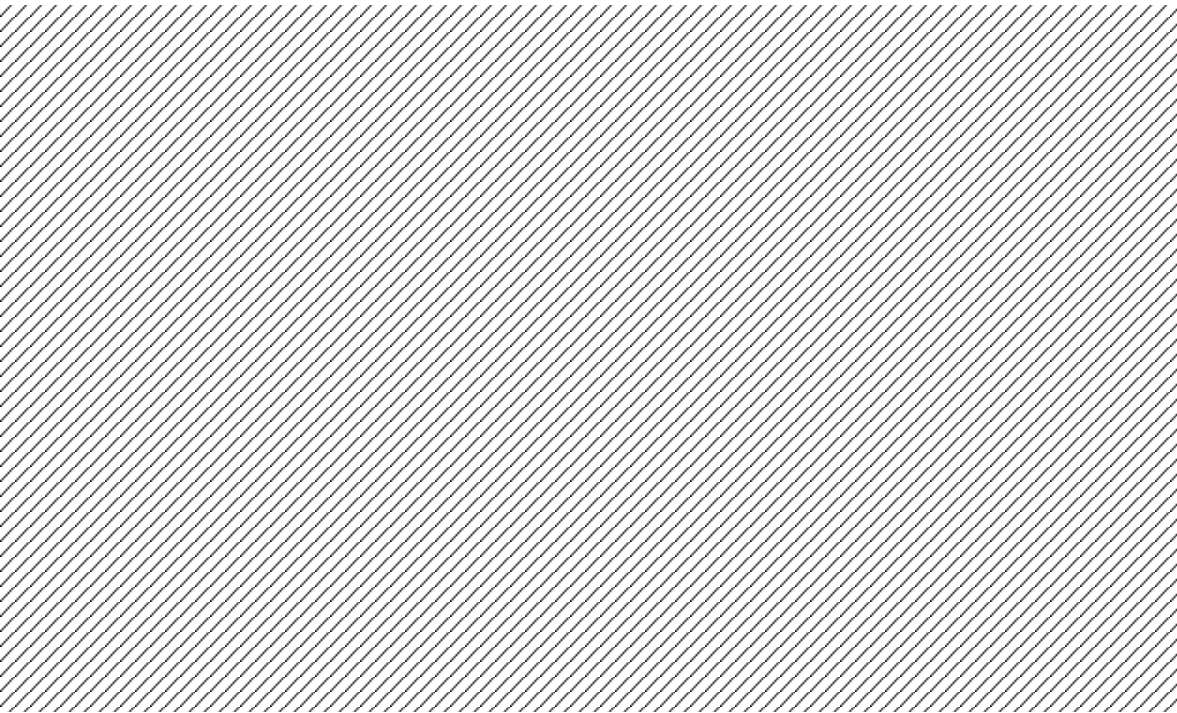


## Lysberegning - Kong Øysteins veg



## Description

Beregnet iht. lysklasser i Statens vegvesens håndbok V124.

Lysklasse kjørefelt: MEW2 (50km/h - ÅDT: 9600)

Lysklasse fortau/sykkelfelt: S1

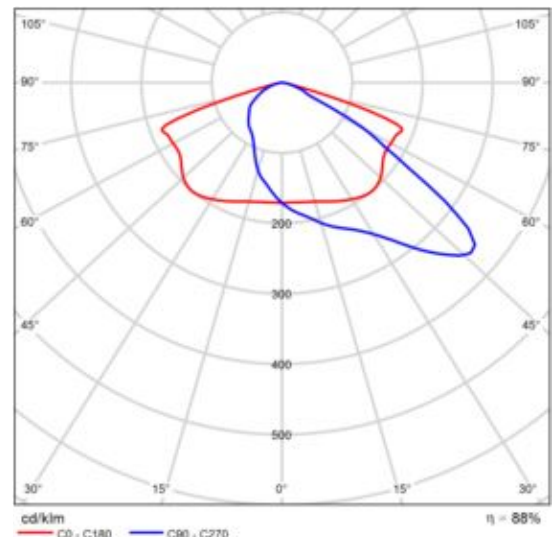
## Product data sheet

PHILIPS BGP763 T25 1 xLED340-4S/740 DM31



### Article No.

P	205.0 W
$\Phi_{\text{Lamp}}$	34000 lm
$\Phi_{\text{Luminaire}}$	29829 lm
$\eta$	87.73 %
Luminous efficacy	145.5 lm/W
CCT	3000 K
CRI	100

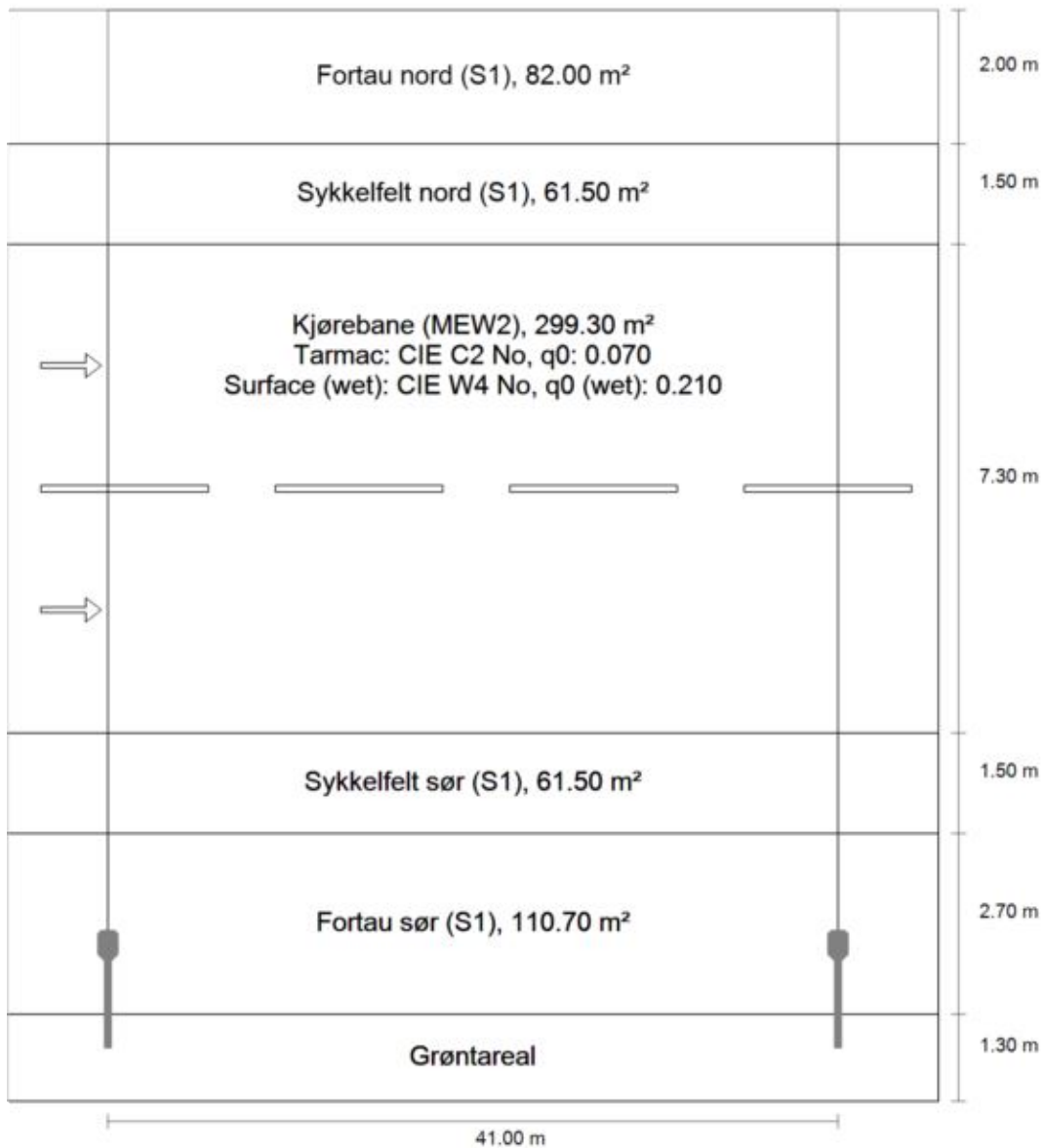


Polar LDC

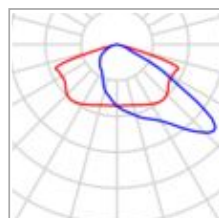
Get your city ready for the future with DigiStreet. Developed with the aim to become your long term partner, the system ready architecture of DigiStreet enables you to enjoy the benefits of connected lighting systems today and also gets the city ready for the innovations to come!. Its two sockets enable you to connect directly to the Philips CityTouch system and is also prepared to connect you to the future innovations of IoT.

Next to this, each individual luminaire is uniquely identifiable, thanks to the Philips Service tag application. With a simple scan of a QR code, placed on the inside of the mast door, you gain instant access to the luminaire configuration, making maintenance and programming operations faster and easier, no matter what stage of the luminaire's lifetime. DigiStreet is also equipped with dedicated light recipes that: 1) maintain an optimal ecosystems for bats or 2) preserve a dark night sky.

Kong Øysteins veg · Alternative 1

**Summary (according to EN 13201:2004)**

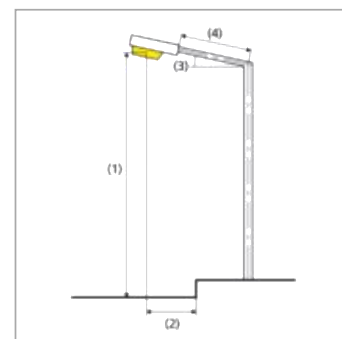
Kong Øysteins veg · Alternative 1

**Summary (according to EN 13201:2004)**

Manufacturer	PHILIPS	P	205.0 W
Article No.		$\Phi_{\text{Lamp}}$	34000 lm
Article name	BGP763 T25 1 xLED340-4S/740 DM31	$\Phi_{\text{Luminaire}}$	29829 lm
Fitting	1x LED340-4S/740	$\eta$	87.73 %

BGP763 T25 1 xLED340-4S/740 DM31 (single side bottom)

Pole distance	41.000 m
(1) Light spot height	10.000 m
(2) Light point overhang	-3.200 m
(3) Boom inclination	5.0°
(4) Boom length	1.495 m
Consumption	4920.0 W/km
ULR / ULOR	0.00 / 0.00
Max. luminous intensities	70°: 649 cd/klm
Any direction forming the specified angle from the downward vertical, with the luminaire installed for use.	80°: 26.0 cd/klm 90°: 2.50 cd/klm
Luminous intensity class	G.3
Glare index class	D.2



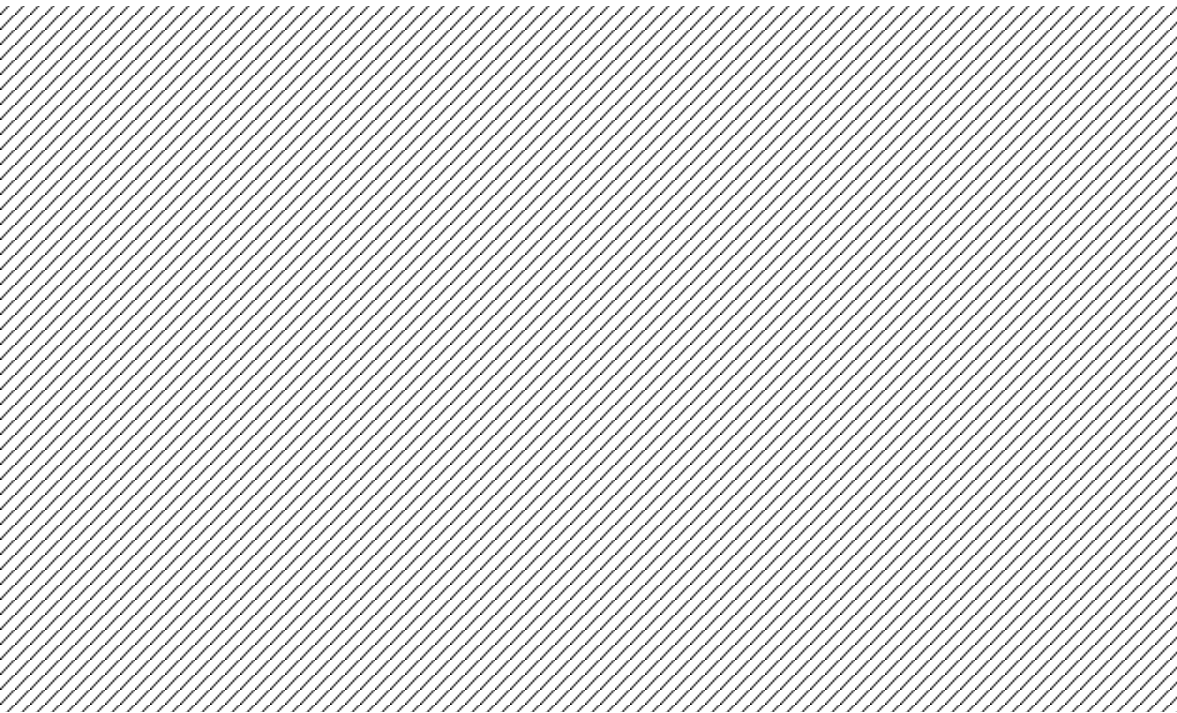
Results for valuation fields

Kong Øysteins veg · Alternative 1

**Summary (according to EN 13201:2004)**

	Symbol	Calculated	Target	Check
Fortau nord (S1)	E <sub>av</sub>	21.79 lx	[15.00 - 22.50] lx	✓
	E <sub>min</sub>	19.30 lx	≥ 5.00 lx	✓
Sykkelfelt nord (S1)	E <sub>av</sub>	25.32 lx	[15.00 - 22.50] lx	✗
	E <sub>min</sub>	22.74 lx	≥ 5.00 lx	✓
Kjørebane (MEW2)	L <sub>av</sub>	1.57 cd/m <sup>2</sup>	≥ 1.50 cd/m <sup>2</sup>	✓
	U <sub>o</sub>	0.65	≥ 0.40	✓
	U <sub>l</sub>	0.62	≥ 0.60	✓
	TI	8 %	≤ 10 %	✓
	SR	0.80	≥ 0.50	✓
	U <sub>ow</sub>	0.31	≥ 0.15	✓
Sykkelfelt sør (S1)	E <sub>av</sub>	27.75 lx	[15.00 - 22.50] lx	✗
	E <sub>min</sub>	10.35 lx	≥ 5.00 lx	✓
Fortau sør (S1)	E <sub>av</sub>	21.31 lx	[15.00 - 22.50] lx	✓
	E <sub>min</sub>	6.01 lx	≥ 5.00 lx	✓

A maintenance factor of 0.80 was used for calculating for the installation.



## Description

Lysberegning av rundkjøring og tilstøtende gangfelt i Bromstadekra.

Lysklasse rundkjøring: CE2.

Emid: min. 20lx

U0: min 0,4

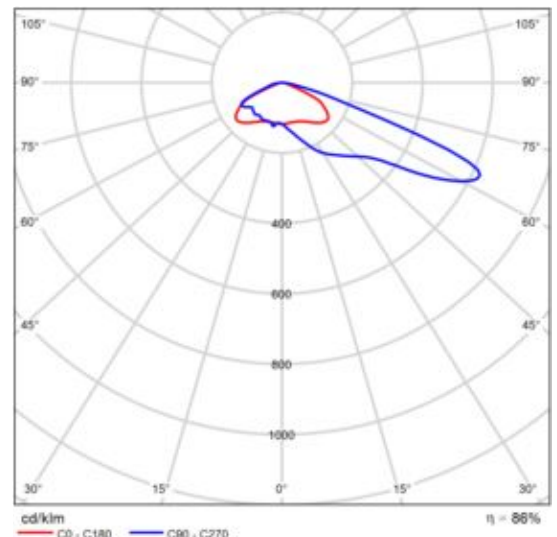
## Product data sheet

PHILIPS BGP763 T25 1 xLED260-4S/740 DX50



### Article No.

P	158.0 W
$\Phi_{\text{Lamp}}$	26000 lm
$\Phi_{\text{Luminaire}}$	22400 lm
$\eta$	86.15 %
Luminous efficacy	141.8 lm/W
CCT	3000 K
CRI	100



Polar LDC

Get your city ready for the future with DigiStreet. Developed with the aim to become your long term partner, the system ready architecture of DigiStreet enables you to enjoy the benefits of connected lighting systems today and also gets the city ready for the innovations to come!. Its two sockets enable you to connect directly to the Philips CityTouch system and is also prepared to connect you to the future innovations of IoT.

Next to this, each individual luminaire is uniquely identifiable, thanks to the Philips Service tag application. With a simple scan of a QR code, placed on the inside of the mast door, you gain instant access to the luminaire configuration, making maintenance and programming operations faster and easier, no matter what stage of the luminaire's lifetime. DigiStreet is also equipped with dedicated light recipes that: 1) maintain an optimal ecosystems for bats or 2) preserve a dark night sky.



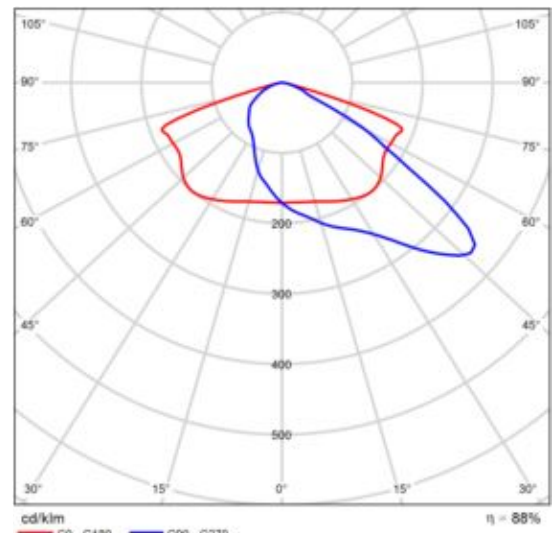
## Product data sheet

PHILIPS BGP763 T25 1 xLED340-4S/740 DM31



### Article No.

P	205.0 W
$\Phi_{\text{Lamp}}$	34000 lm
$\Phi_{\text{Luminaire}}$	29829 lm
$\eta$	87.73 %
Luminous efficacy	145.5 lm/W
CCT	3000 K
CRI	100



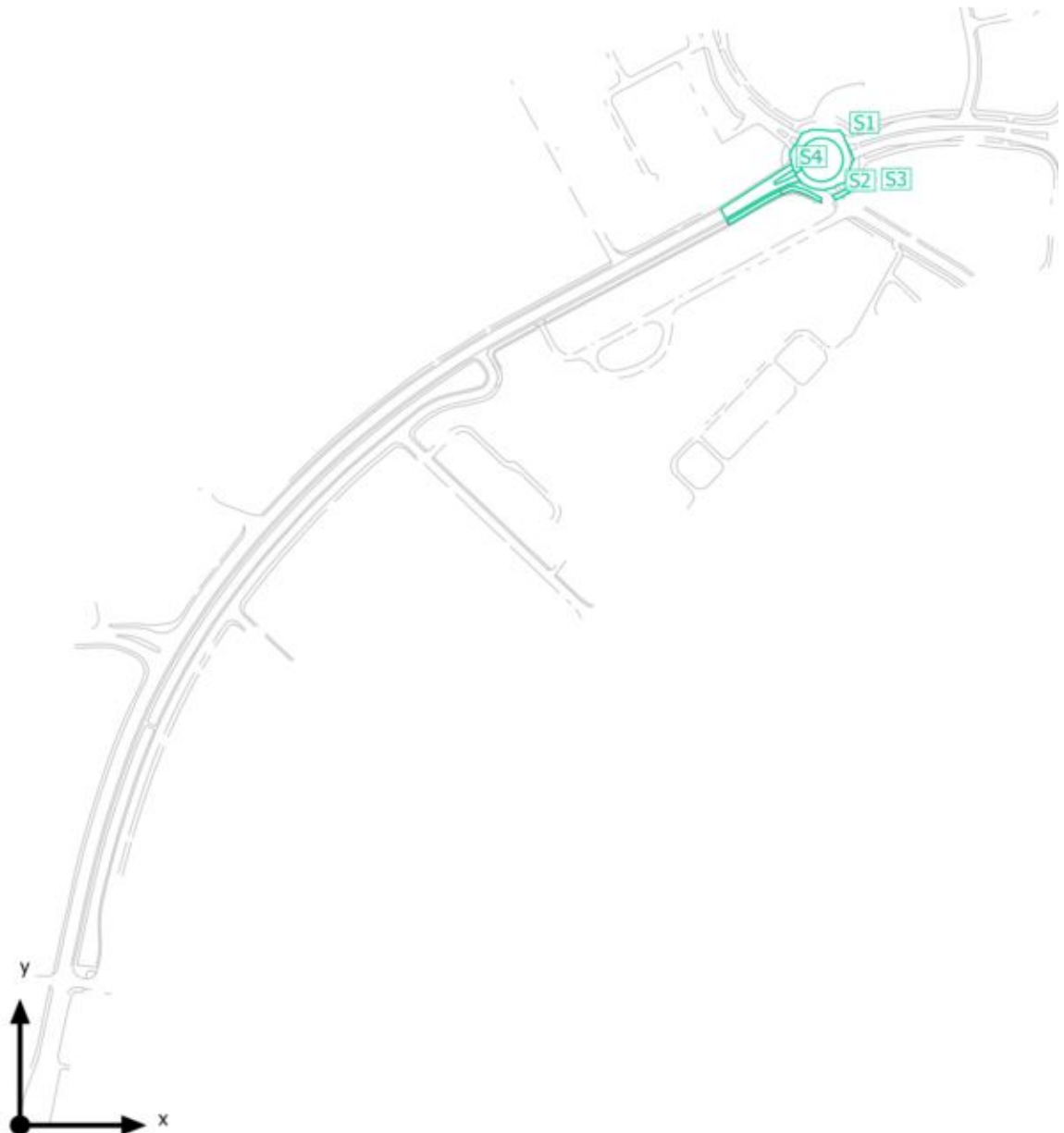
Polar LDC

Get your city ready for the future with DigiStreet. Developed with the aim to become your long term partner, the system ready architecture of DigiStreet enables you to enjoy the benefits of connected lighting systems today and also gets the city ready for the innovations to come!. Its two sockets enable you to connect directly to the Philips CityTouch system and is also prepared to connect you to the future innovations of IoT.

Next to this, each individual luminaire is uniquely identifiable, thanks to the Philips Service tag application. With a simple scan of a QR code, placed on the inside of the mast door, you gain instant access to the luminaire configuration, making maintenance and programming operations faster and easier, no matter what stage of the luminaire's lifetime. DigiStreet is also equipped with dedicated light recipes that: 1) maintain an optimal ecosystems for bats or 2) preserve a dark night sky.

Site 1

## Calculation objects



Site 1

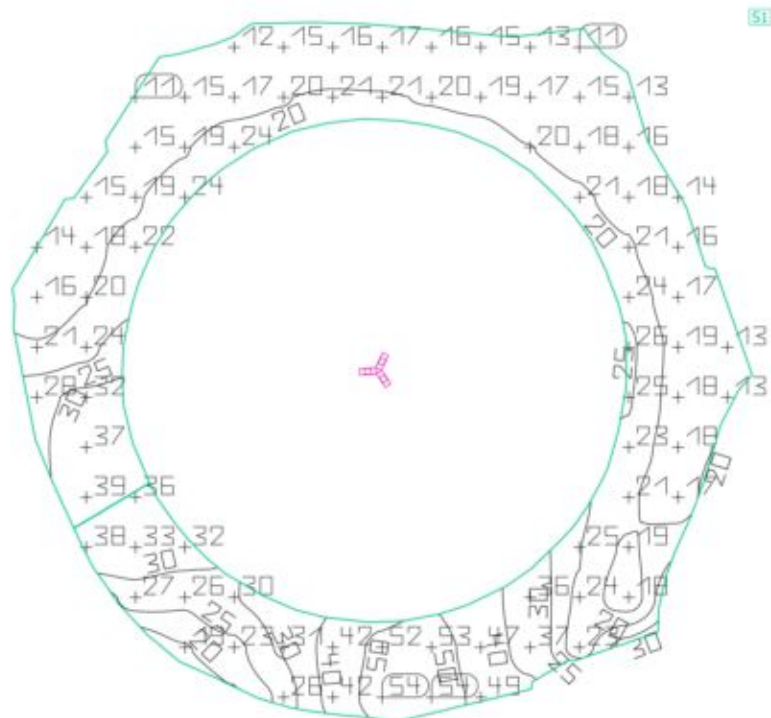
**Calculation objects**

## Calculation surfaces

Properties	$\bar{E}$	$E_{min}$	$E_{max}$	$g_1$	$g_2$	Index
Rundkjøring Perpendicular illuminance Height: 0.000 m	23.9 lx	11.2 lx	54.4 lx	0.47	0.21	S1
Gangfelt v/Esso Perpendicular illuminance Height: 0.000 m	21.4 lx	6.05 lx	44.4 lx	0.28	0.14	S2
Fortau sør Perpendicular illuminance Height: 0.000 m	26.9 lx	8.25 lx	51.9 lx	0.31	0.16	S3
Kjørebane Perpendicular illuminance Height: 0.000 m	33.0 lx	18.2 lx	49.0 lx	0.55	0.37	S4

Utilisation profile: DIALux presetting, Standard (outdoor transportation area)

Site 1

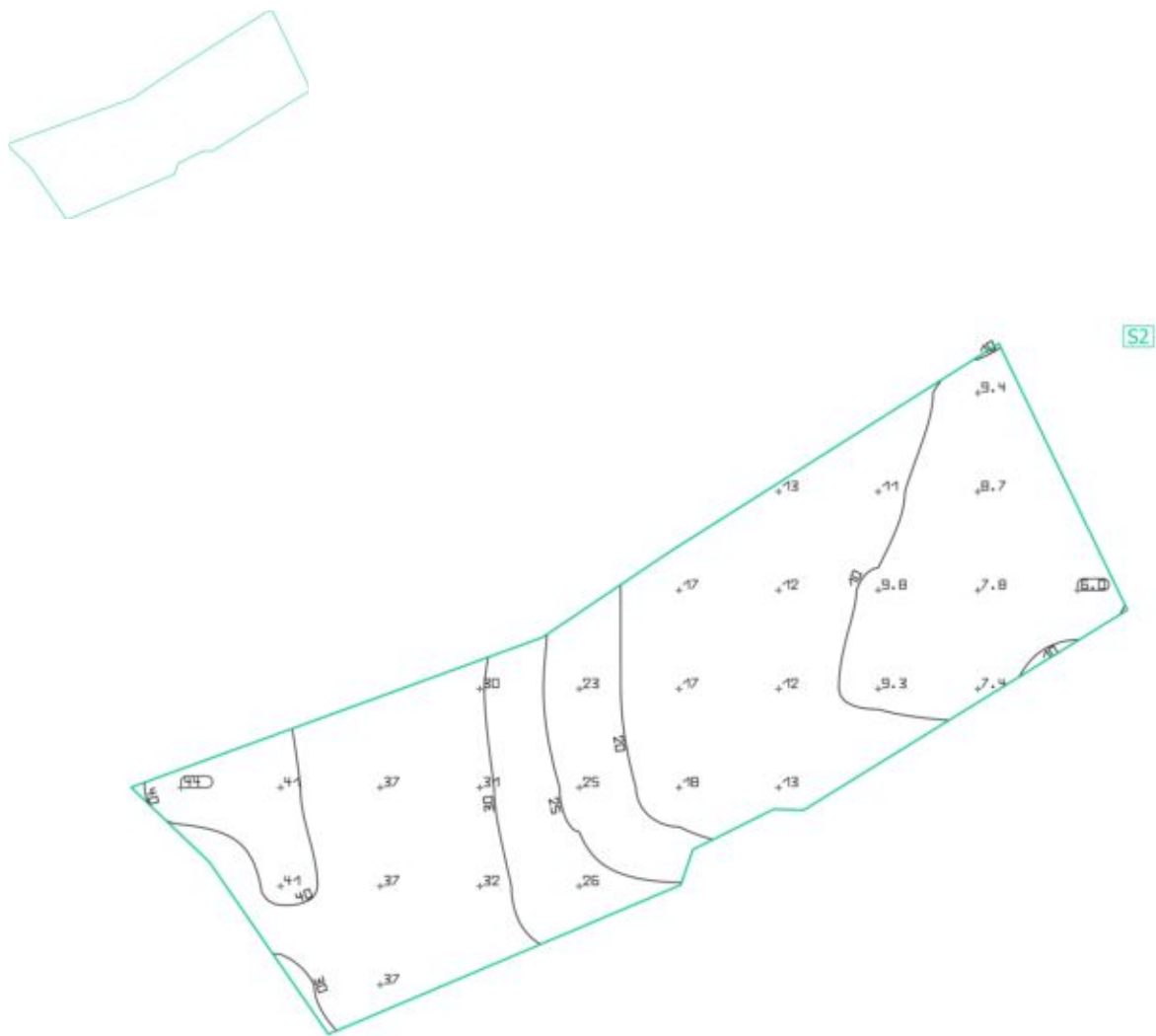
**Rundkjøring**

Properties	$\bar{E}$	$E_{min}$	$E_{max}$	$g_1$	$g_2$	Index
Rundkjøring	23.9 lx	11.2 lx	54.4 lx	0.47	0.21	S1
Perpendicular illuminance						
Height: 0.000 m						

Utilisation profile: DIALux presetting, Standard (outdoor transportation area)

Site 1

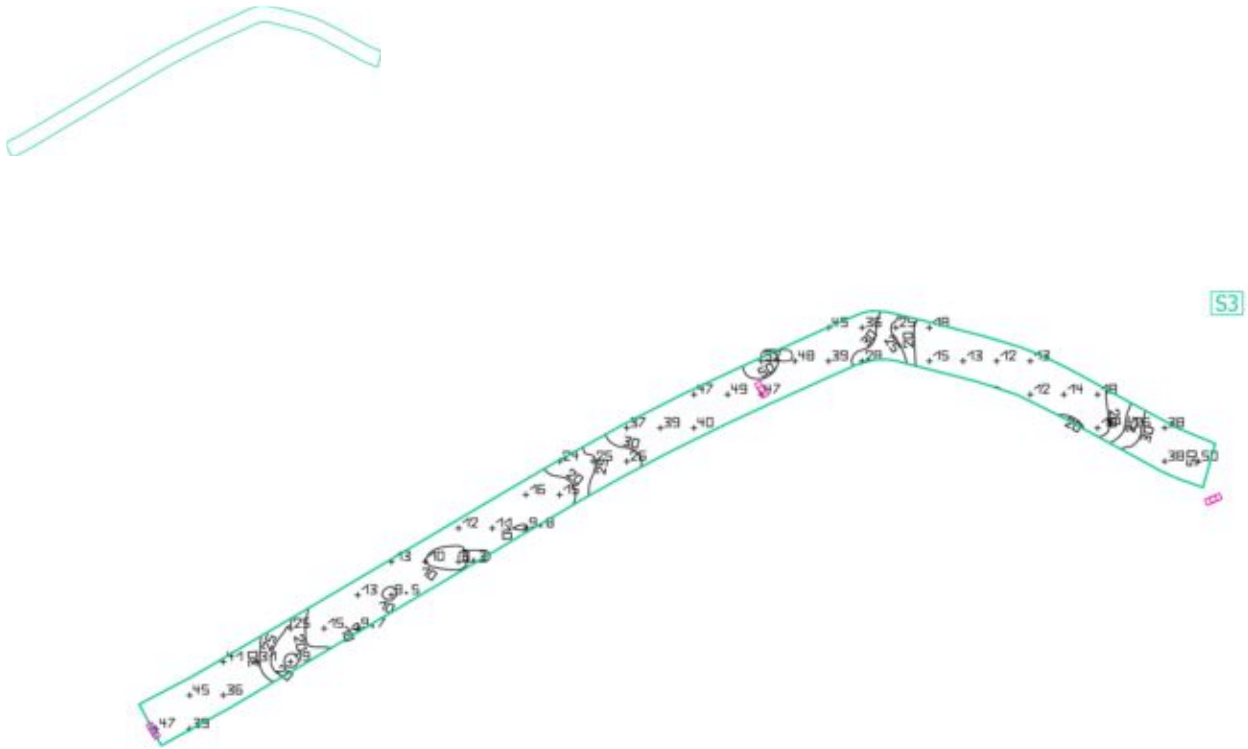
## Gangfelt v/Esso



Properties	$\bar{E}$	$E_{\min}$	$E_{\max}$	$g_1$	$g_2$	Index
Gangfelt v/Esso Perpendicular illuminance Height: 0.000 m	21.4 lx	6.05 lx	44.4 lx	0.28	0.14	S2

Utilisation profile: DIALux presetting, Standard (outdoor transportation area)

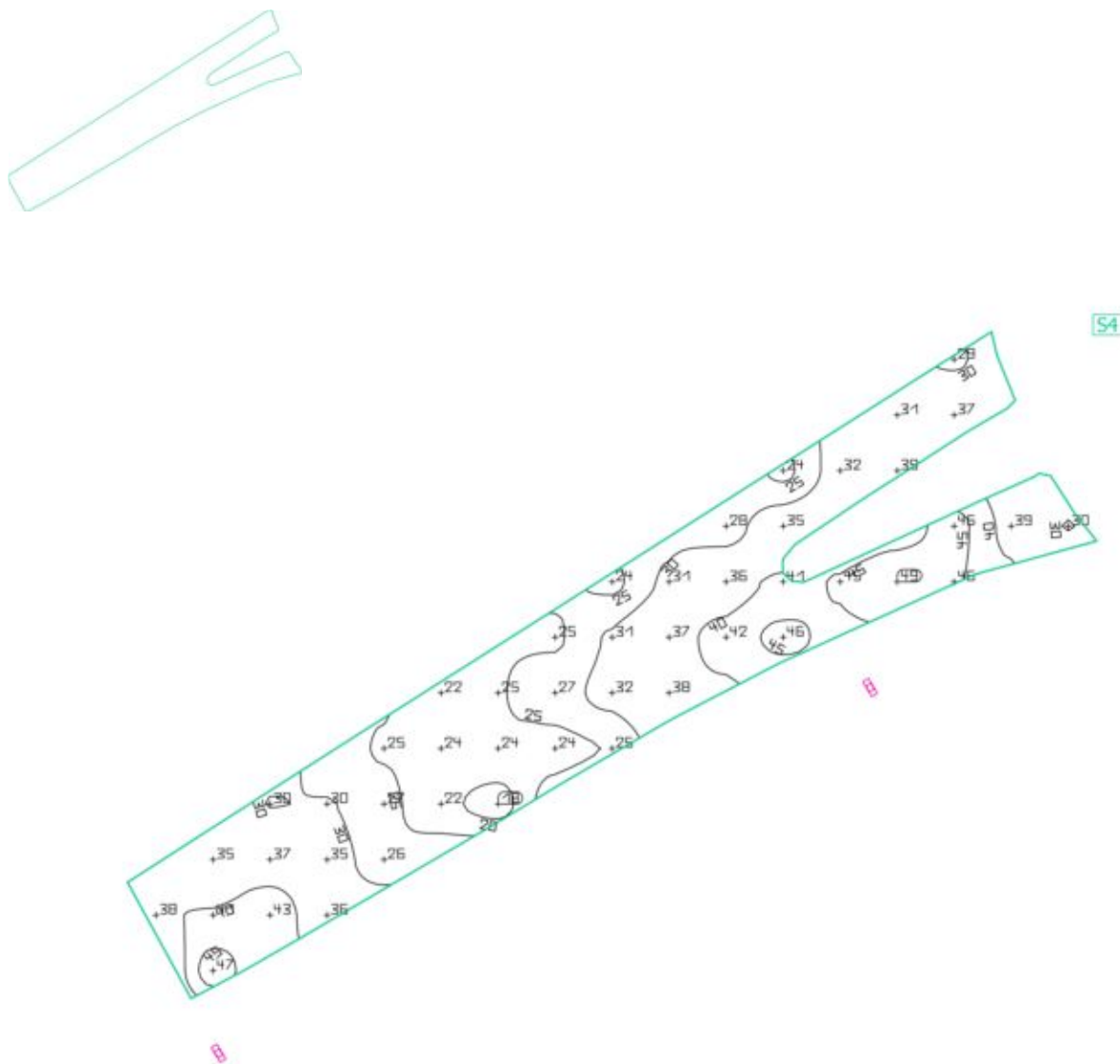
Site 1

**Fortau sør**

Properties	$\bar{E}$	$E_{\min}$	$E_{\max}$	$g_1$	$g_2$	Index
Fortau sør	26.9 lx	8.25 lx	51.9 lx	0.31	0.16	S3
Perpendicular illuminance						
Height: 0.000 m						

Utilisation profile: DIALux presetting, Standard (outdoor transportation area)

Site 1

**Kjørebane**

Properties	$\bar{E}$	$E_{\min}$	$E_{\max}$	$g_1$	$g_2$	Index
Kjørebane	33.0 lx	18.2 lx	49.0 lx	0.55	0.37	S4
Perpendicular illuminance						
Height: 0.000 m						

Utilisation profile: DIALux presetting, Standard (outdoor transportation area)